

The 'manageable' location system

Southern Monitoring and Northern Monitoring's

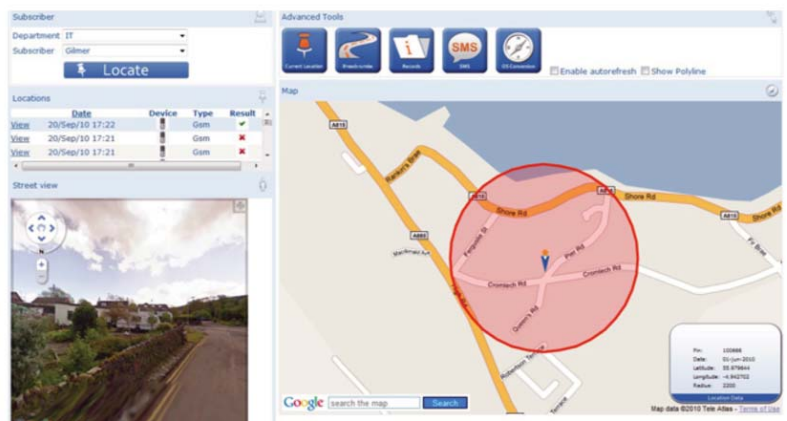
ArchAngel *PinPoint*

A secure, legally compliant and cost effective Location Management Service

This easy to use management tool operates via an existing mobile phone over a secure internet connection. Authorised users can easily track and trace remote staff and lone workers in real time almost anywhere in the world via feature-rich Google maps.

ArchAngel *PinPoint* tells you:

- The whereabouts of any employee - accurate to within 5 meters
- The current location of multiple users in one view
- Mileage reports - distance travelled; speed; start and end of trips
- Route history of any device over a specific timeframe
- When employees enter or leave defined perimeters of operation
- Live and near real-time location data for improved customer service





ArchAngel *PinPoint*

ArchAngel PinPoint enables Lone Workers to log their time and attendance, location and send a "man down" alert at the a touch of a button (even with the keypad locked).

All of the these feature sets are seamlessly integrated into Google maps for simple, easy man management.

The *ArchAngel PinPoint* Lone Worker solution:

- Flexible - tailored to meet business and individual Lone Working risks
- Suitable for all risks - low, medium, high and very high
- Monitored by Southern/Northern Monitoring Services - for added reassurance
- Can reduce insurance premiums

This unique solution works in parallel with MAS which is why it is our choice for a smarter Lone Worker protection.